

Mapping L-Theanine to Your Neural State

 keyorahealth.substack.com/p/l-theanine-5-functional-neuro-profiles

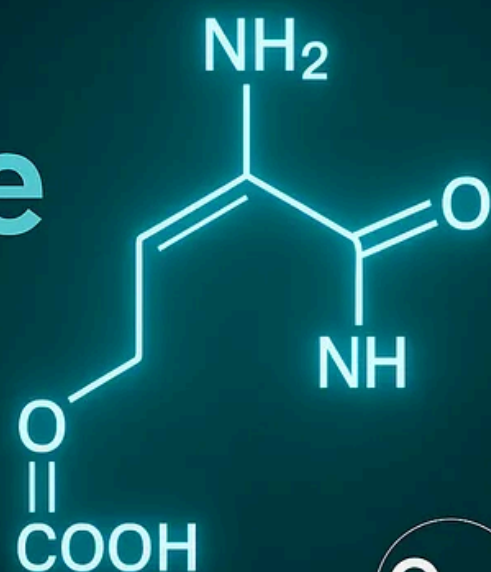
Keyora

November 25, 2025

This article is part of Keyora's long-form educational series documenting the scientific foundations behind our product development.

ORCID: [0009-0007-5798-1996](https://orcid.org/0009-0007-5798-1996)

DOI: [10.5281/zenodo.1688013](https://doi.org/10.5281/zenodo.1688013)




L-Theanine

By Keyora Research Notes Series

This article is part of Keyora's long-form educational series documenting the scientific foundations behind our product development.

ORCID: <https://orcid.org/0000-0007-5798-1996>
DOI: [10.5281/zenodo.1688013](https://doi.org/10.5281/zenodo.1688013)



Keyora

One Molecule, Five Distinct Neurobiological Profiles

L-Theanine is a single amino acid compound, yet it operates differently depending on the neural environment of the person consuming it.

Modern neuroscience tells us something crucial: *People do not experience stress the same way - because their brains do not operate the same way.*

Across Keyora's research, user interviews, and clinical trial mapping, we found that L-Theanine's effects cluster around five functional population groups, each with its own pattern of stress physiology, neurotransmitter imbalances, and cognitive demands.

These groups are:

1. Students
2. High-Stress Working Professionals
3. Entrepreneurs & Founders
4. Perimenopausal & Menopausal Women
5. Medical Professionals, Scientists, and High-Cognitive Experts

The same molecule → five different outcomes → driven by five distinct neurobiological states.

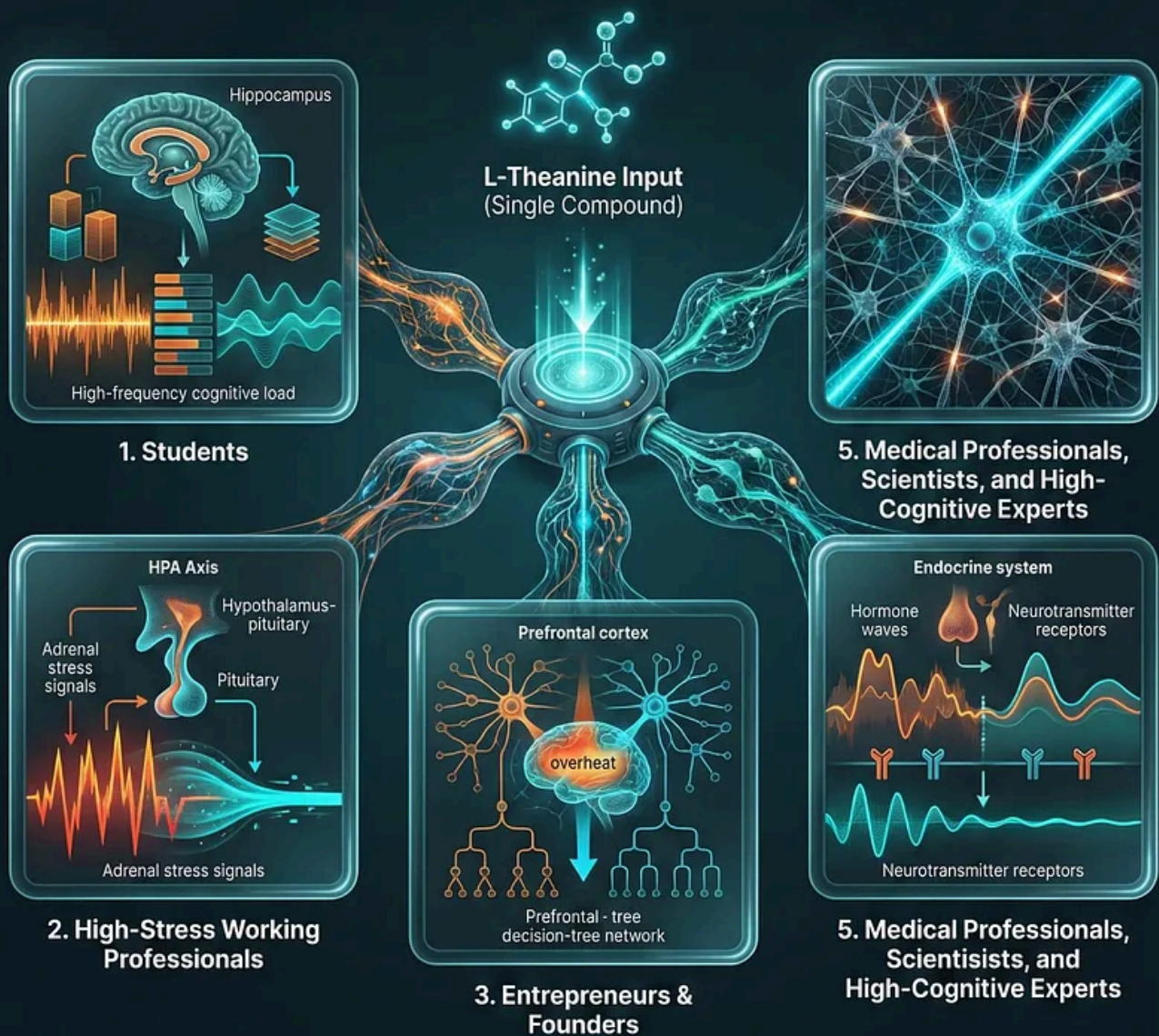
This chapter explains why.

One Molecule, Five Distinct Neurobiological Profiles

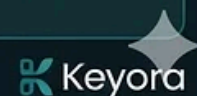
L-Theanine is a single amino acid compound, yet it operates differently depending on the neural environment...

Modern neuroscience tells us something crucial: **People do not experience stress the same way—because their brains do not operate the same way.**

Across Keyora's research... L-Theanine's effects cluster around five functional population groups...



The same molecule → five different outcomes → driven by five distinct neurobiological states. This chapter explains why.



1. Students - High Learning Pressure, High Glutamate, High Reactivity

Neurobiological Profile

Student brains display:

- A still-maturing prefrontal cortex
- Higher baseline glutamate from intense learning
- Dopamine swings linked to digital overstimulation
- Poor sleep consistency
- Strong cortisol spikes during exam periods
- Higher emotional and sensory reactivity

These factors generate:

- test anxiety
- difficulty sustaining attention
- racing thoughts
- fragmented focus
- inconsistent sleep patterns

Students – High Learning Pressure, High Glutamate, High Reactivity

Neurobiological Profile

A still-maturing prefrontal cortex

Higher baseline glutamate from intense learning

Dopamine swings linked to digital overstimulation

Poor sleep consistency

Strong cortisol spikes during exam periods

Higher emotional and sensory reactivity

These factors generate:

- text anxiety
- difficulty sustaining attention
- racing thoughts
- fragmented sleep patterns

Why Keyora Studies This Group

Students represent the classic “high-cognition, high-pressure, low-sleep” model—a perfect case where L-Theanine’s neural-stabilizing effects shine.

Why Keyora Studies This Group

Students represent the classic “high-cognition high-pressure, low-sleep” model—a perfect case where L-Theanine’s neural-stabilizing

Keyora

How L-Theanine Supports Students

1.1 Stress-Resilient Focus

L-Theanine reduces cortical noise allowing attention to stabilize during high cognitive load.

1.2 Better Working Memory Under Pressure

By modulating glutamate and increasing alpha waves, it protects memory performance during exams.

1.3 Lower Exam-Induced Cortisol Spikes

This improves emotional stability and reduces “panic shutdown.”



EMOTION

COGNITION

STRESS

How L-Theanine Supports Students

1.1 Stress-Resilient Focus

L-Theanine reduces cortical noise, allowing attention to stabilize during high cognitive load.

1.2 Better Working Memory Under Pressure

By modulating glutamate and increasing alpha waves, it protects memory performance during exams.

1.3 Lower Exam-Induced Cortisol Spikes

This improves emotional stability and reduces “panic shutdown.”

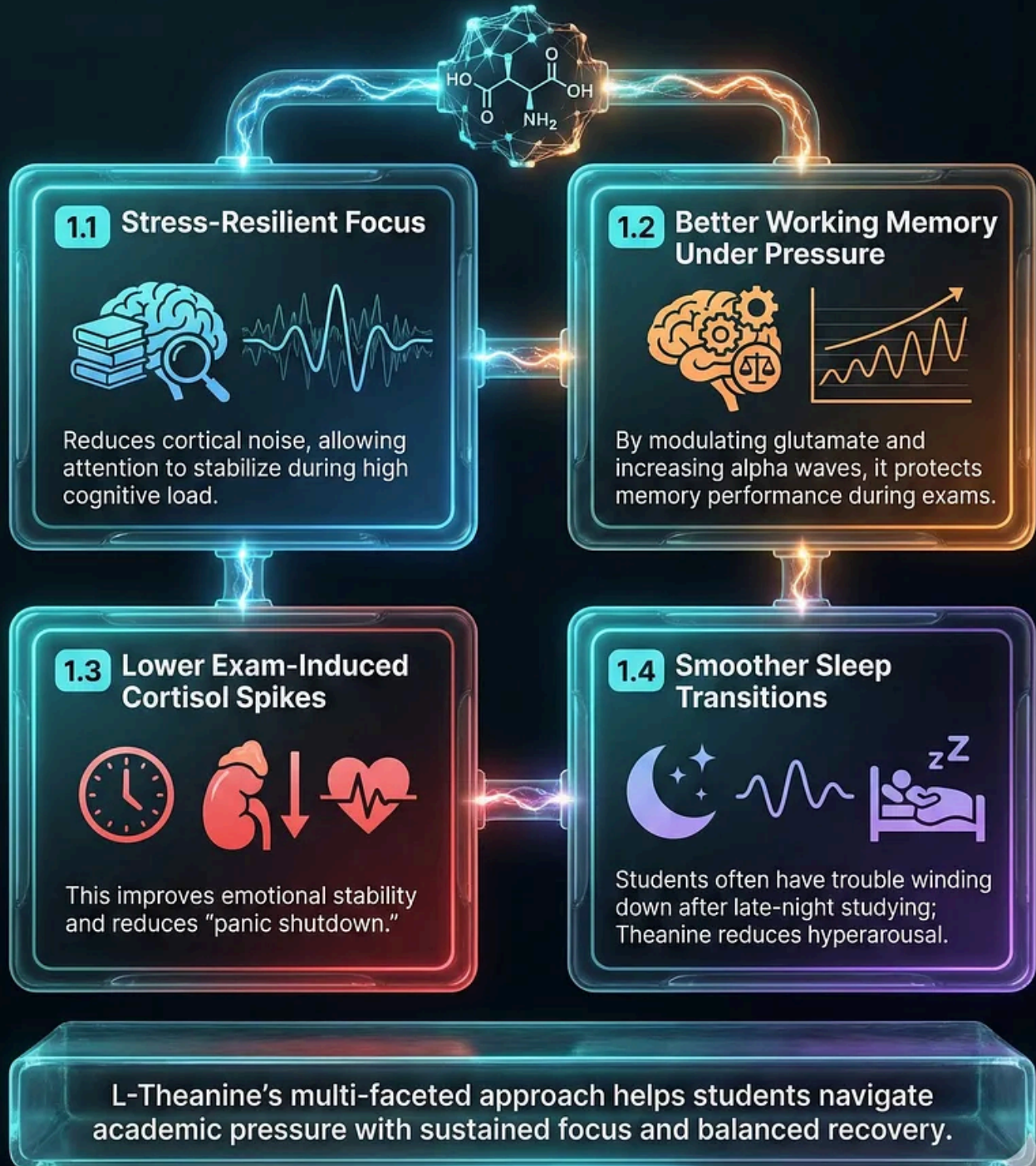
1.4 Smoother Sleep Transitions

Students often have trouble winding down after late-night studying; Theanine reduces hyperarousal.

Students represent the classic “high-cognition, high-pressure, low-sleep” model- a perfect case where L-Theanine’s neural-stabilizing effects shine.

How L-Theanine Supports Students

L-Theanine provides targeted support for the unique cognitive and physiological challenges faced by students, promoting balanced focus and emotional resilience.



Keyora

2. High-Stress Working Professionals - Chronic Cortisol and Cognitive Fragmentation

Neurobiological Profile

Modern professionals often operate in a state of chronic overactivation:

- Persistently elevated cortisol
- Continuous multitasking demand
- Reduced HRV due to stress
- Emotional fragmentation
- Constant deadlines
- Heavy caffeine reliance
- Poor recovery cycles

Symptoms include:

- difficulty unwinding
- irritability
- shallow breathing
- stress-related sleep issues
- cognitive fatigue
- short temper

High-Stress Working Professionals: Chronic Cortisol and Cognitive Fragmentation

Neurobiological Profile: Modern professionals often operate in a state of chronic overactivation...

Persistently elevated cortisol, continuous multitasking demand, reduced HRV...

Symptoms include: difficulty unwinding, irritability, shallow breathing, cognitive fatigue...

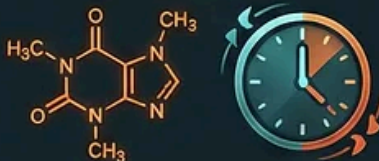
CHRONIC STRESS STATE



Persistently Elevated Cortisol & Adrenal Load



Cognitive Fragmentation & Multitasking Demand



Heavy Caffeine Reliance & Poor Recovery Cycles

- 🔥 Irritability
- 🔥 Shallow Breathing
- 🔥 Short Temper

L-THEANINE SUPPORT

2.1 Cortisol Reduction



Evidence-Backed Cortisol Reduction



2.2 Improved PFC Stability: Top-Down Control



2.3 Enhanced Parasympathetic Recovery: Higher HRV & Resilience



2.4 Reduced Somatic Stress Symptoms: Muscle Tension, Restlessness, Agitation

L-Theanine Impact

Why Keyora Studies This Group:

This population forms a major share of real-world users seeking emotional stability without sedation or dependency.



How L-Theanine Supports High-Stress Professionals

2.1 Cortisol Reduction

One of the clearest evidence-backed effects in human studies.

2.2 Improved Prefrontal Cortex Stability

Theanine restores “top-down control,” improving decision-making clarity.

2.3 Enhanced Parasympathetic Recovery

Higher HRV → better stress resilience and faster post-stress recovery.

2.4 Reduced Somatic Stress Symptoms

Muscle tension, restlessness, chest tightness, and autonomic agitation often improve.

This population forms a major share of real-world users seeking emotional stability without sedation or dependency.

HOW L-THEANINE SUPPORTS HIGH-STRESS PROFESSIONALS

2.1



CORTISOL REDUCTION

One of the clearest evidence-backed effects in human studies.

2.2



IMPROVED PREFRONTAL CORTEX STABILITY

Theanine restores 'top-down control,' improving decision-making clarity.

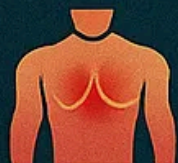
2.3



ENHANCED PARASYMPATHETIC RECOVERY

Higher HRV → better stress resilience and faster post-stress recovery.

2.4



REDUCED SOMATIC STRESS SYMPTOMS

Muscle tension, restlessness, chest tightness, and autonomic agitation

3. Entrepreneurs & Founders - High Autonomic Reactivity, High Uncertainty, High Emotional Load

Entrepreneurs are not simply “high stress.”

They exist inside a biological profile unique to high-responsibility decision cycles.

Neurobiological Profile

- HPA axis hyperactivation
- Elevated adrenaline baseline
- Sleep restriction
- Unpredictable emotional intensity
- Cognitive volatility
- Fast context switching
- Risk-related stress responses

Symptoms include:

- high-alert thinking
- emotional reactivity
- situational anxiety
- difficulty switching off at night
- burnout tendencies

Entrepreneurs & Founders – High Autonomic Reactivity, High Uncertainty, High Emotional Load

Entrepreneurs are not simply “high stress.”

They exist inside a biological profile unique to high-responsibility decision cycles.

Neurobiological Profile

HPA axis hyperactivation
Elevated adrenaline baseline
Sleep restriction
Unpredictable emotional intensity
Cognitive volatility
Fast context switching

Symptoms include:

- high-alert thinking
- emotional reactivity
- situational anxiety
- difficulty switching off at night
- burnout tendencies

How L-Theanine Supports Entrepreneurs
Theanine directly aligns with their

How L-Theanine Supports Entrepreneurs

3.1 Reduces Stress-Induced Impulsivity

Theanine stabilizes the prefrontal cortex, preventing threat-driven reactions.

3.2 Promotes Calm Thinking Amid Chaos

Alpha-wave modulation supports clarity and strategic reasoning.

3.3 Improves Decision Quality Under Pressure

Lower amygdala hyperreactivity = fewer fear-driven decisions

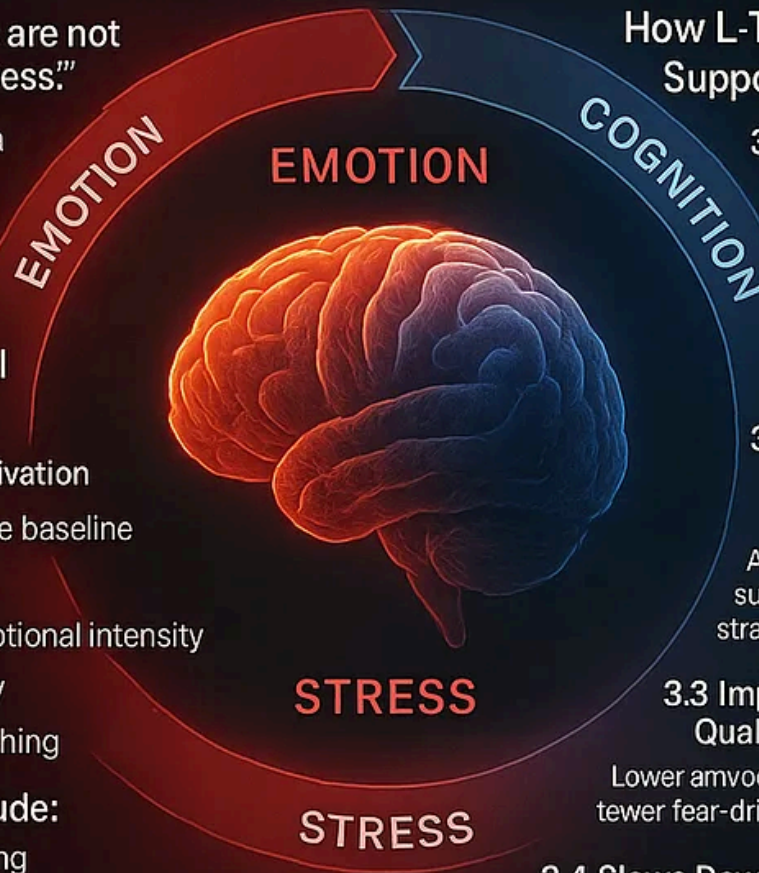
3.4 Slows Down Burnout

Lower cortisol | better sleep
→ improved sustainability,

Why Keyora Studies This Group

Entrepreneurs embody the “high-performance anxiety model!”–

Keyora



How L-Theanine Supports Entrepreneurs

3.1 Reduces Stress-Induced Impulsivity

Theanine stabilizes the prefrontal cortex, preventing threat-driven reactions.

3.2 Promotes Calm Thinking Amid Chaos

Alpha-wave modulation supports clarity and strategic reasoning.

3.3 Improves Decision Quality Under Pressure

Lower amygdala hyperreactivity = fewer fear-driven decisions.

3.4 Slows Down Burnout Trajectory

Lower cortisol + better sleep → improved sustainability.

Entrepreneurs embody the “high-performance anxiety model”—Theanine directly aligns with their neurophysiological needs.

How L-Theanine Supports Entrepreneurs

L-Theanine offers crucial neurobiological support for entrepreneurs, enhancing cognitive stability and resilience in high-pressure environments.



Keyora

4. Perimenopausal & Menopausal Women - Hormonal Transition Meets Stress Amplification

Hormonal transition fundamentally reshapes stress sensitivity.
This population is biologically distinct from any other group in this chapter.

Neurobiological Profile

During perimenopause and menopause, estrogen fluctuations affect:

- GABA synthesis ↓
- Serotonin modulation ↓
- Cortisol reactivity ↑
- Autonomic sensitivity ↑
- Sleep stability ↓
- Amygdala activation ↑

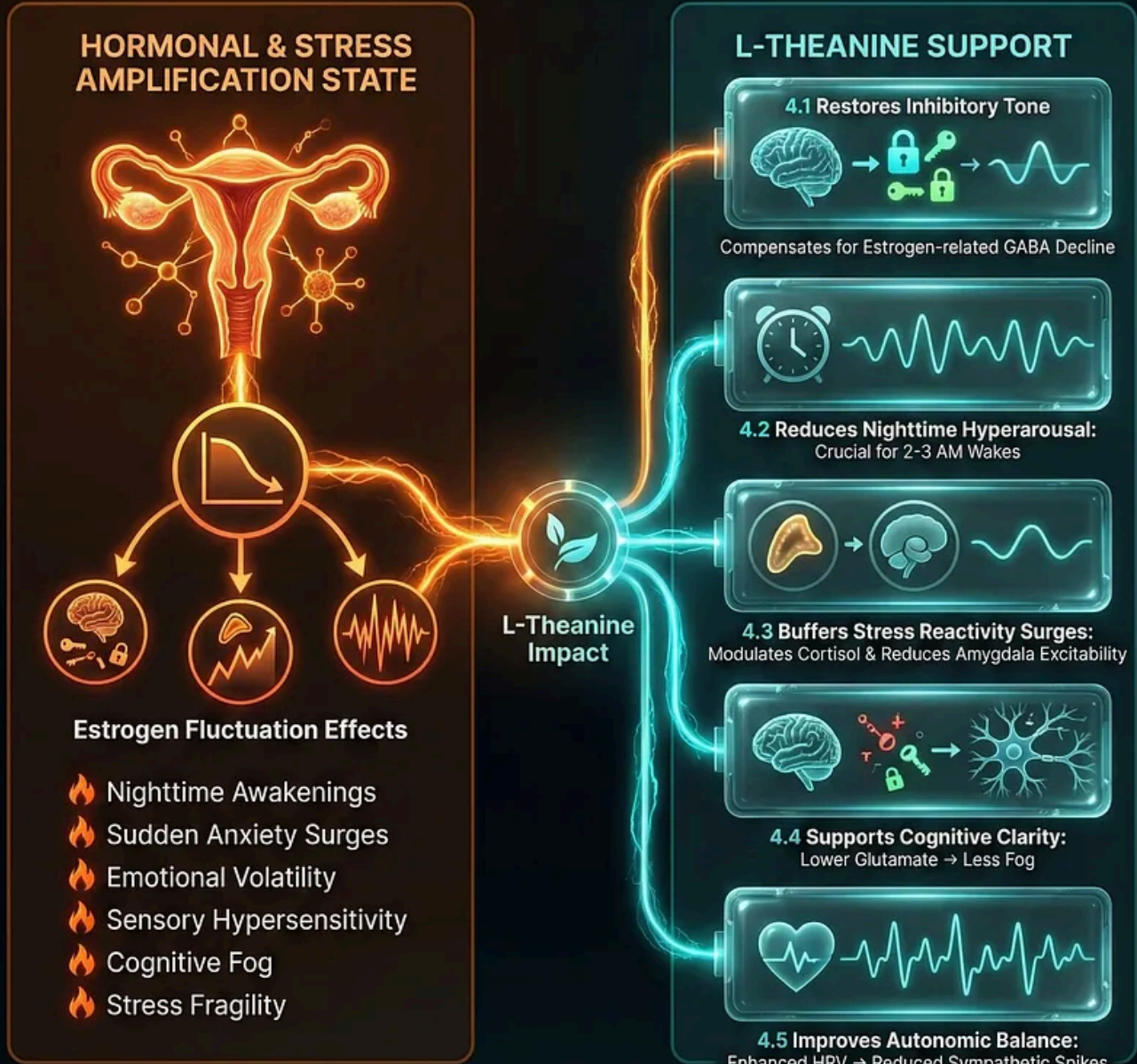
These shifts cause:

- nighttime awakenings
- sudden anxiety surges
- emotional volatility
- sensory hypersensitivity
- cognitive fog
- stress fragility

Perimenopausal & Menopausal Women: Hormonal Transition Meets Stress Amplification

Hormonal transition fundamentally reshapes stress sensitivity, standing in one of menopause, and menopause. This population is **biologically distinct**, to more stress and neuroendocrine effects affect with biochemical fluctuations...

During perimenopause and menopause, estrogen fluctuations affect: GABA synthesis ↓, Serotonin modulation ↓, Serotonin modulation ↓, Cortisol reactivity ↑, Autonomic sensitivity ↑, Sleep stability ↓, Amygdala activation ↑...



Why Keyora Studies This Group:
 This is one of the most stress-sensitive neurotypes due to hormonal transition. L-Theanine naturally complements their regulatory needs without hormonal manipulation.



How L-Theanine Supports Menopausal Women

4.1 Restores Inhibitory Tone

Compensates for estrogen-related GABA decline, improving emotional stability.

4.2 Reduces Nighttime Hyperarousal

Crucial for women who “wake up at 2–3 AM and can’t return to sleep.”

4.3 Buffers Stress Reactivity Surges

Modulates cortisol and reduces amygdala excitability.

4.4 Supports Cognitive Clarity

Lower glutamate → less fog, better verbal working memory.

4.5 Improves Autonomic Balance


Enhanced HRV → reduced sympathetic spikes.

This is one of the most stress-sensitive neurotypes due to hormonal transition.



L-Theanine naturally complements their regulatory needs without hormonal manipulation.

How L-Theanine Supports Menopausal Women



Keyora's Neurobiological Support for Hormonal Transition




4.1 Restores Inhibitory Tone
Compensates for estrogen-related GABA decline, improving emotional stability.

4.2 Reduces Nighttime Hyperarousal
Crucial for women who "wake up at 2-3 AM and can't return to sleep."

4.3 Buffers Stress Reactivity Surges
Modulates cortisol and reduces amygdala excitability.



4.4 Supports Cognitive Clarity
Lower glutamate → less fog, better verbal working memory.




4.5 Improves Autonomic Balance
Enhanced HRV → reduced sympathetic spikes.

L-Theanine provides multi-targeted neuro-support to navigate menopausal changes with greater calm, clarity, and balance.

5. Medical Professionals, Scientists, and High-Cognitive Experts

Brains Running at Peak Load With Minimal Recovery

These are the “precision cognition” populations.

Neurobiological Profile

- Extremely high cognitive demand
- Decision pressure with low error tolerance
- Long working hours
- High information density
- Reduced sleep
- Prefrontal fatigue
- Stress-induced cognitive fragmentation

Symptoms include:

- attention collapse under exhaustion
- emotional blunting
- accuracy decline
- anxiety during critical decisions
- intrusive background stress

Medical Professionals, Scientists, and High-Cognitive Experts – Brains Running at Peak Load With Minimal Recovery*

Neurobiological Profile

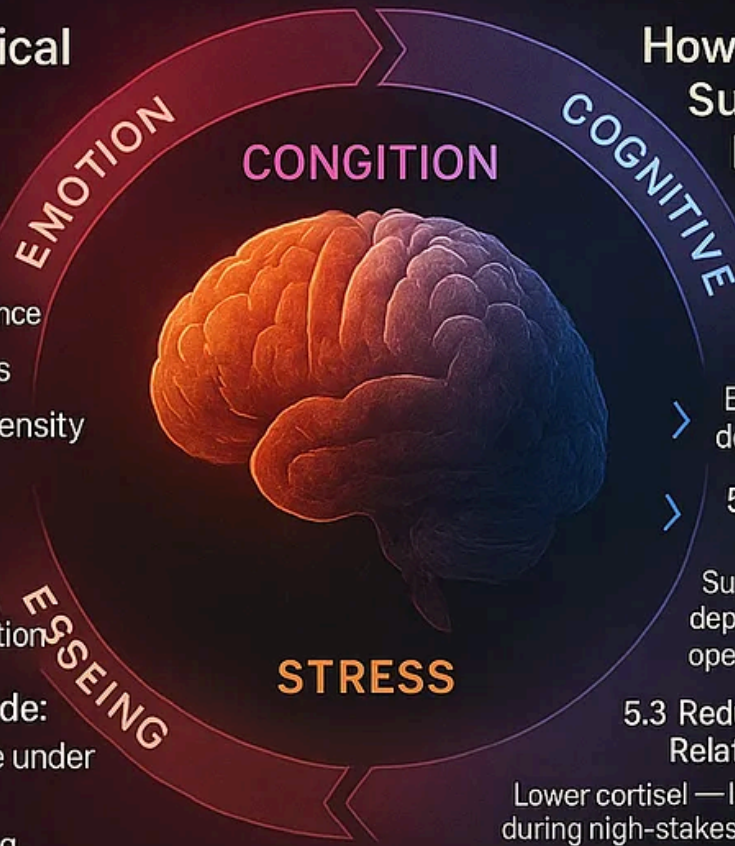
Extremely high cognitive demand
 Decision pressure with low error tolerance
 Long working hours
 High Information density
 Reduced sleep:
 Prefrontal fatigue
 Stress induced cognitive fragmentation

Symptoms include:

- attention collapse under exhaustion
- emotional blunting
- accuracy decline.
- anxiety during critical decisions
- intrusive background stress

Why Keyora Studies This Group

These Individuals operate in “maximum load environments” where minor cognitive disruptions can have disproportionate



How L-Theanine Supports High-Cognitive Experts

5.1 Enhances Cognitive Resilience

Especially during sleep deprivation and shift work.

5.2 Improves Attention Stability

Supports precision-dependent cognitive operations.

5.3 Reduces Decision-Related Anxiety

Lower cortisol — Improved calmness during high-stakes tasks.

5.4 Protects Cognitive Accuracy

Reduces neural noise during overlo.

5.5 Enhances Recovery During Limited Downtime

Parasympathetic activation supports brief but effective recuperation.

Keyora

How L-Theanine Supports High-Cognitive Experts

5.1 Enhances Cognitive Resilience

Especially during sleep deprivation and shift work.

5.2 Improves Attention Stability

Supports precision-dependent cognitive operations.

5.3 Reduces Decision-Related Anxiety

Lower cortisol → improved calmness during high-stakes tasks.

5.4 Protects Cognitive Accuracy

Reduces neural noise during overload.

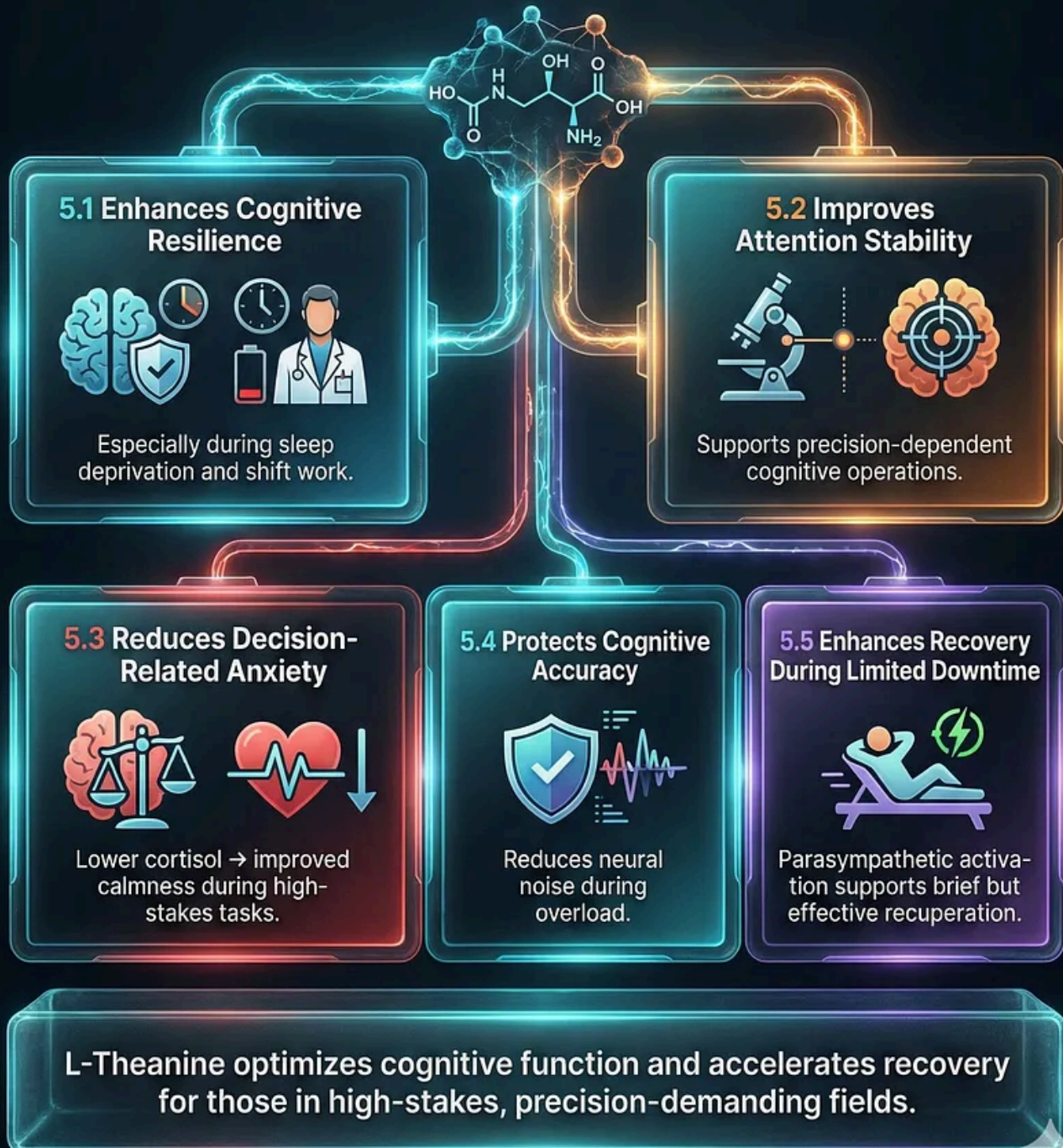
5.5 Enhances Recovery During Limited Downtime

Parasympathetic activation supports brief but effective recuperation.

These individuals operate in “maximum load environments” where minor cognitive disruptions can have disproportionate consequences - making Theanine uniquely valuable.

How L-Theanine Supports High-Cognitive Experts

L-Theanine provides essential support for individuals requiring sustained peak cognitive performance under demanding conditions.



Keyora

6. Cross-Population Synthesis - The Same Molecule, Five Distinct Neural Needs

Students

→ High learning pressure, glutamate overload, exam anxiety

High-Stress Professionals

→ Chronic cortisol, multitasking overload, emotional fragmentation

Entrepreneurs

→ High-alert decision cycles, HPA hyperactivation, sleep disruption

Menopausal Women

→ Hormonal transition amplifying stress and sleep disturbance

Medical/Scientific Experts

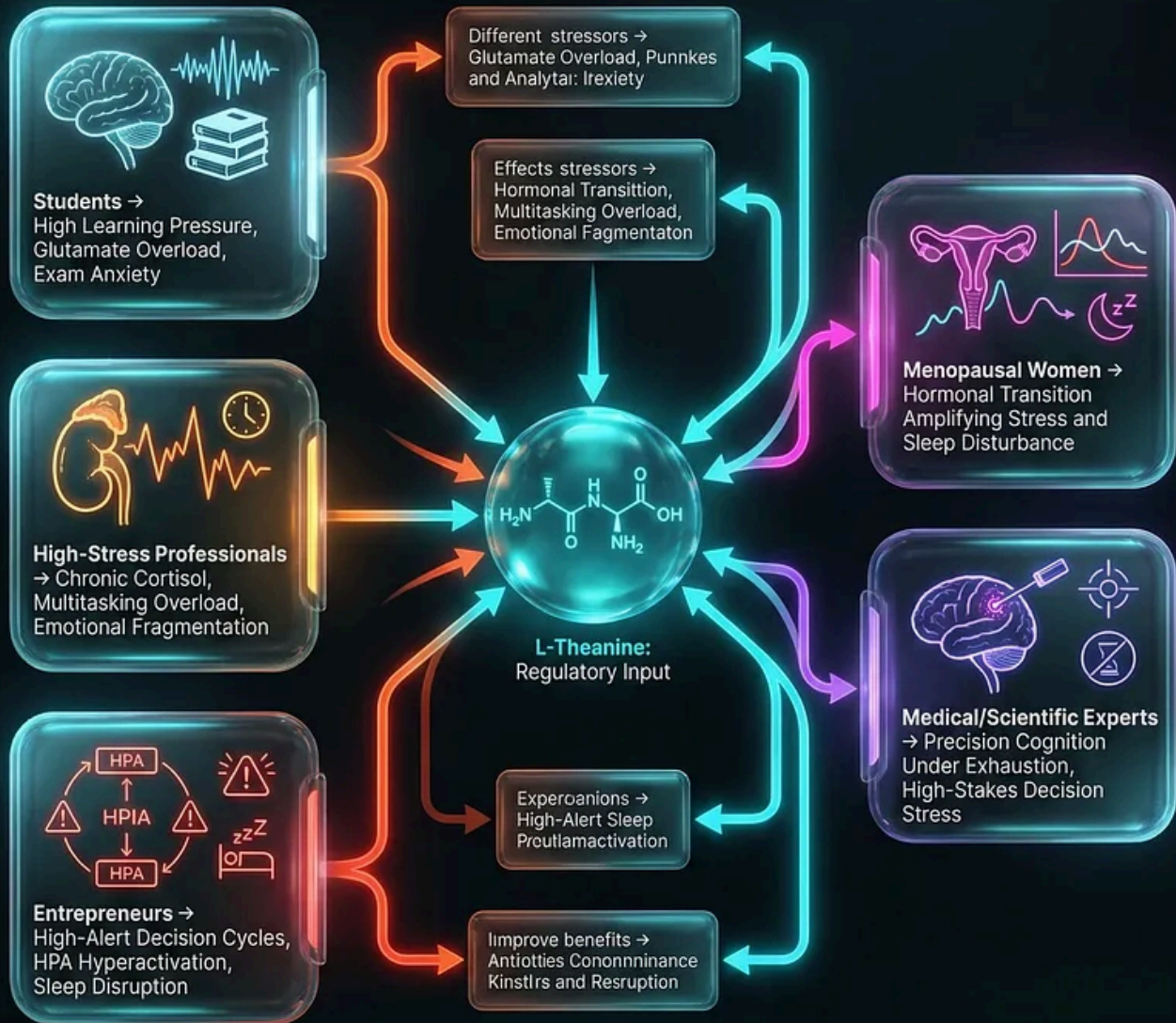
→ Precision cognition under exhaustion, high-stakes decision stress

Different stressors → different neural pathways → different benefits from the same molecule.

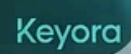
It is a regulatory ingredient - and each population needs regulation for a different reason."

Cross-Population Synthesis — The Same Molecule, Five Distinct Neural Needs

Different stressors → different neural pathways → different benefits from the same molecule.
Keyora's neuroscience insight: "L-Theanine is not a calming ingredient. It is a regulatory ingredient - and each population needs regulation for a different reason."



Keyora's neuroscience insight:
"L-Theanine is not a calming ingredient. It is a regulatory ingredient - and each population needs regulation for a different reason."

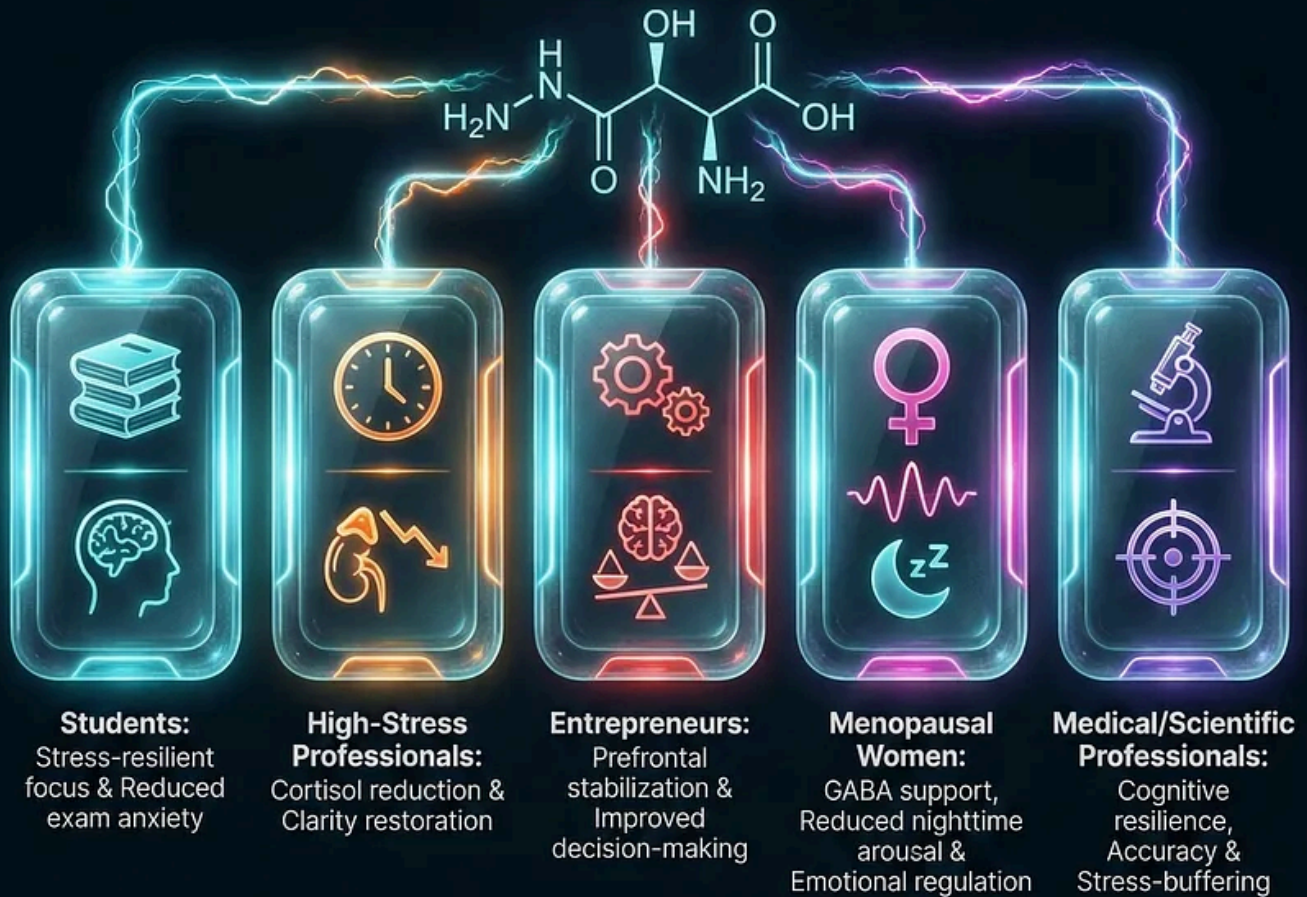


7. Summary

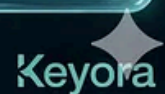
-
- L-Theanine interacts differently with different population neurotypes.
 - Students benefit through stress-resilient focus and reduced exam anxiety.
 - High-stress professionals benefit through cortisol reduction and clarity restoration.
 - Entrepreneurs benefit through prefrontal stabilization and improved decision-making.
 - Menopausal women benefit through GABA support, reduced nighttime arousal, and emotional regulation.
 - Medical and scientific professionals benefit through cognitive resilience, accuracy, and stress-buffering.
 - These population-specific mechanisms form the backbone of Keyora's research-led product philosophy.

Summary: L-Theanine's Population-Specific Neurobiological Benefits

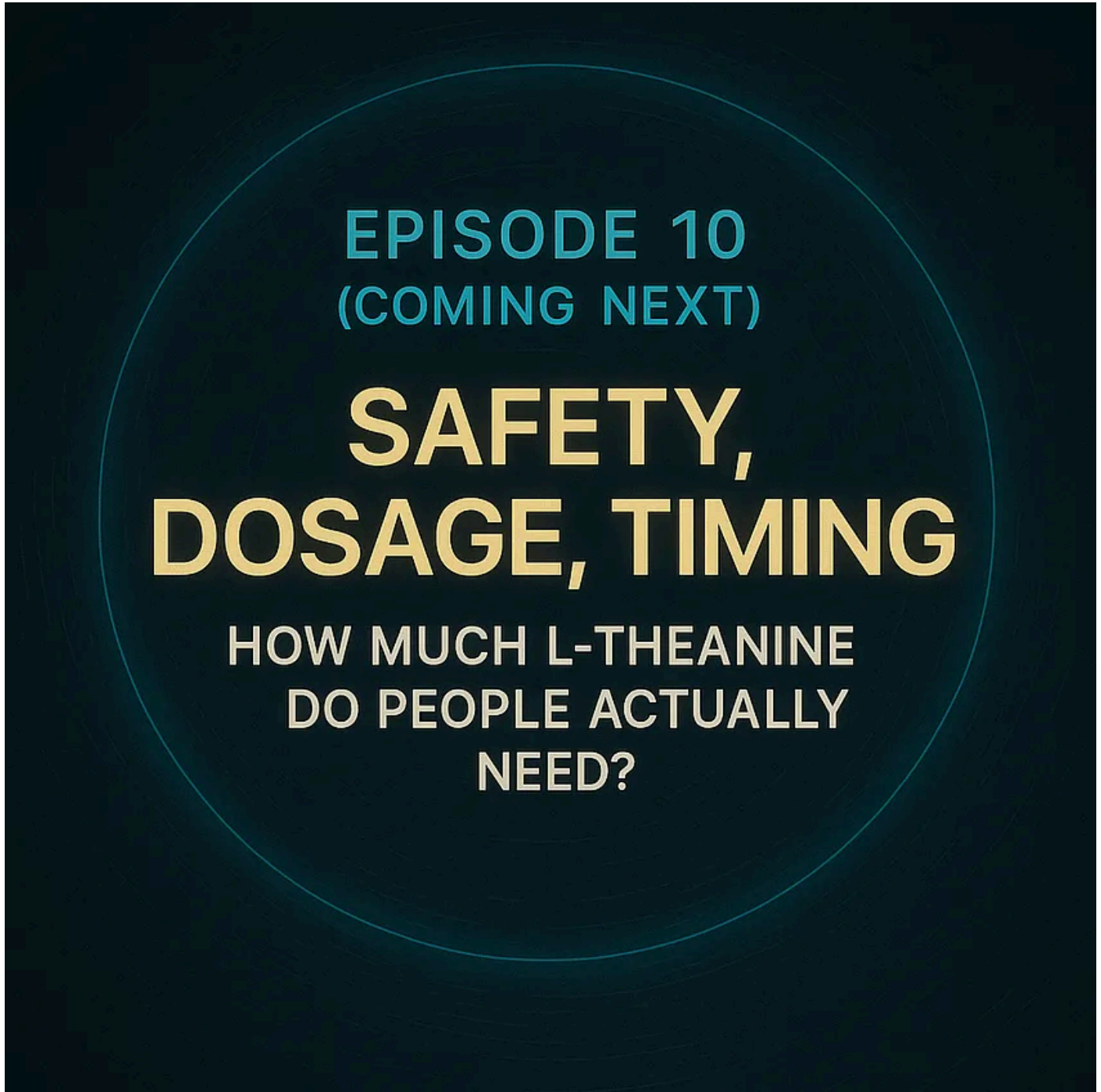
L-Theanine interacts differently with different population neurotypes, offering targeted support based on unique neural needs.



These population-specific mechanisms form the backbone of Keyora's research-led product philosophy.



Episode 10 (Coming Next)



This article is part of Keyora's long-form educational series documenting the scientific foundations behind our product development.

ORCID: [0009-0007-5798-1996](https://orcid.org/0009-0007-5798-1996)

DOI: [10.5281/zenodo.1688013](https://doi.org/10.5281/zenodo.1688013)